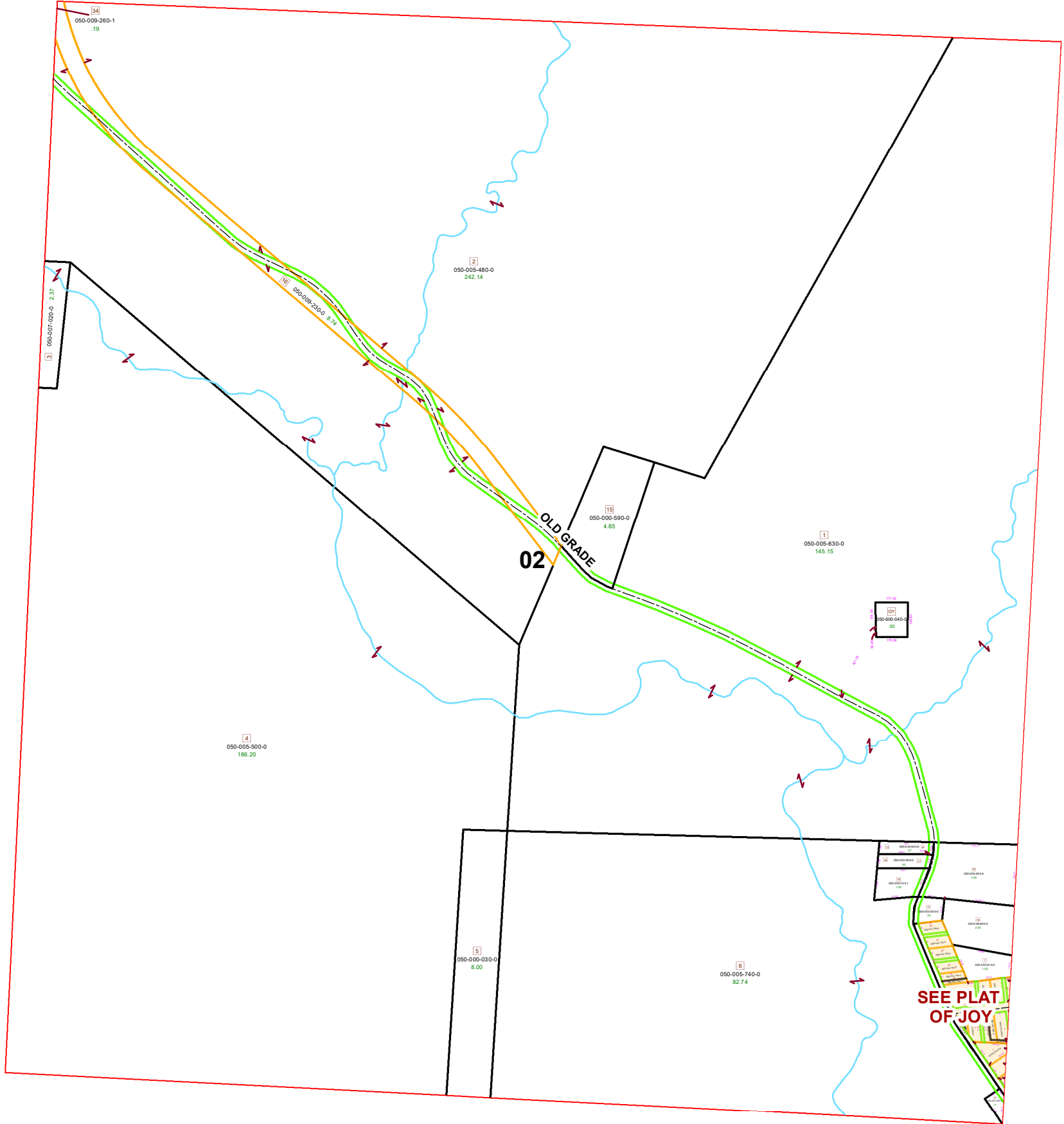
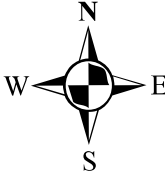


HOMER TOWNSHIP SECTION 2 R13 TWP 7 MORGAN COUNTY, OH

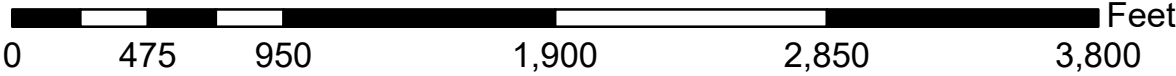


PIN	VOL	PAGE	Owner	LegalDescr	Acres
050-600-040-0			CEMETERY (JOY)	R13 T07 S02 0	0.5
050-007-020-0	OR229	426	CHRISTIE JANE TRUST C/O ROBERT J CHRI	R13 T07 S02 SD 3	2.37
050-002-450-0	D.V 135	37	DUNCAN CHAS E ET 4 AL	R13 T07 S02 SD 11	0.33
050-009-230-0	D.V 204	392	EAST CENTRAL OHIO REALTY	R13 T07 S02 SD 16 RIGHT OF	8.74
050-005-740-1	OR47	285	ELLIS DARREN & TERESA	R13 T07 S02 SD 19 SURVIVO	1
050-005-930-0	OR26	428	ELLIS DARREN & TERESA	R13 T07 S02 SD 9-13 N PT S	0.47
050-002-480-0	OR47	285	ELLIS DARREN T & TERESA	R13 T07 S02 SD 17-18 SURVI	0.5
050-005-740-0	OR222	2062	LOWE BETTY M	R13 T07 S02 SD 6	82.74
050-005-500-0	OR222	2062	LOWE BETTY M	R13 T07 S02 SD 4	186.2
050-005-630-0	OR222	2062	LOWE BETTY M	R13 T07 S02 SD 1	145.15
050-005-480-0	OR222	2062	LOWE BETTY M & CONSTANCE M LOWE	R13 T07 S02 SD 2	242.14
050-007-830-0	OR219	1313	MOON JOHN	R13 T07 S02 SD 12	0.248
050-005-610-0	OR225	2968	NORTH KEITH A & JANET S TOD-CRYSTA	R13 T07 S02 SD 7 SURVIVOR	1.02
050-000-590-0	OR128	201	RICHMOND TIMOTHY	R13 T07 S02 SD 15	4.85
050-000-030-0	OR 19	270	ROBERTSON CLIFFORD H & PATRICIA A	R13 T07 S02 SD 05	8
050-005-400-0	OR17	371	TYSON JOYCE	R13 T07 S02 SD 10	3.28
050-009-600-0	D.V 141	745	VINCENT JAMES E	R13 T07 S02 SD 14	2



Boundaries	
----- Hidden	----- ROW
----- Hydro	----- Section
----- Roads	----- Lot
----- County	----- Parcel
----- Township	----- Parcels

SEE PLAT OF JOY



Disclaimer: The information that these maps contains is for reference purposes only. Please bring any errors to the attention of the Engineer's Office staff.
Thank you